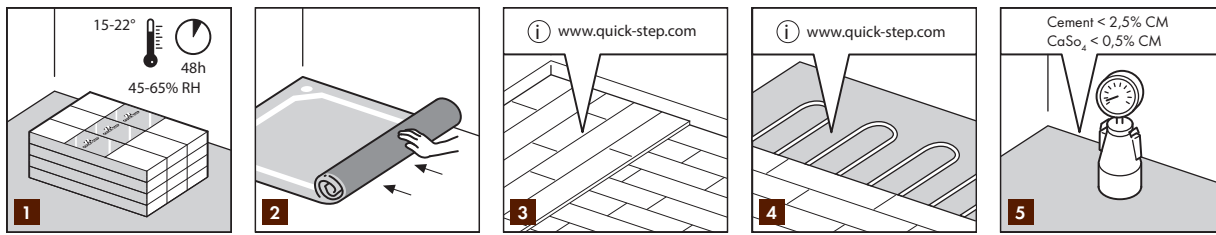


FOR THE BEST RESULTS, IT IS ESSENTIAL TO FOLLOW THE INSTALLATION INSTRUCTIONS CAREFULLY.


1

The floor has been dried beforehand to the optimal wood humidity level. For this reason, the floor panels must be acclimatised in their packaging for a couple of days in the room where the floor will be installed. In the summer this is for at least 48 hours and in the winter 4 to 5 days. This will enable the floor to adapt to the local conditions. The best conditions for installing your floor are a temperature between 15 and 22°C and a relative air humidity level between 45 and 65%.

2

In the case of gluing, the existing floor covering must be entirely removed. For floating floors, remove any damp-open floor covering (carpet, needle felt, etc) first. There is no need to remove existing damp-proof floor covering (PVC, Linoleum, etc). With a floating fitting, always use an underlay. We recommend the use of a Quick-Step underlay.

3

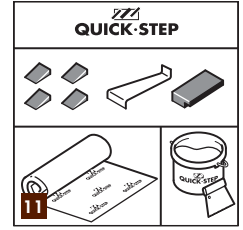
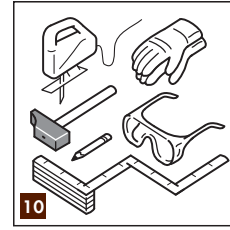
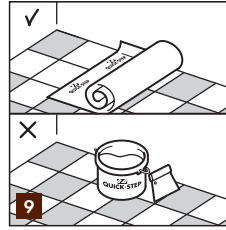
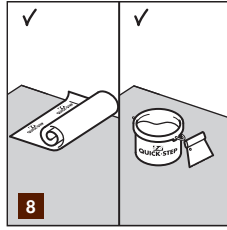
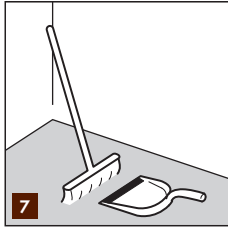
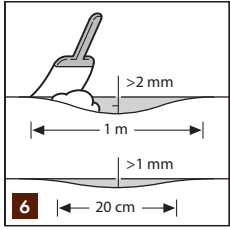
WOODEN SUBFLOOR: Remove any existing floor covering first. No signs of mould and/or insect infestations should be present. Make sure the subfloor is level. Nail down any loose parts. If your plank floor is on the ground level, lay a plastic foil first (Quick-Step Screen). Apply a levelling floor (Quick-Step Softboard) on top of this. For a perfect subfloor preparation, it is recommended to lay a Quick-Step underlay on top of the Softboard to level any unevenness between the Softboard planks. Install the new floor at ninety degrees to the existing subfloor. The crawl space under plank floor must be sufficiently ventilated. Remove any obstacles and make sure there is sufficient ventilation (minimum 4 cm² (1/2") total ventilation openings per m² (40") of floor). The moisture content of the wood must not exceed 10%.

4

Additional instructions apply if there is underfloor heating or cooling. Visit www.quick-step.com for more information.

5

A new concrete floor must dry at least 1 week per 1 cm (3/8") thickness up to 4 cm (1-1/2"). Thicknesses over 4 cm (1-1/2") require twice as much drying time. For example, a 6 cm (2-1/2") concrete subfloor must dry for at least 8 weeks. The moisture content must be less than 2.5% for cement-bound screed (CM method) and 0.5% for an anhydritebound screed.


6

Make sure the subfloor is flat. Any unevenness greater than 2 mm over the length of 1 meter must be smoothed out. The same applies to any unevenness of more than 1 mm over a length of 20 cm.

7

Make sure that the floor base is flat, clean, firm, and dry.

8

You can either fit the parquet floor floating or glue it fully to the floor base. However, you must not use nails or screws to secure the panels. The panels can be clicked together easily thanks to the ingenious shape of the tongue and groove of the Uniclic® Multifit click system, so gluing the joints is not necessary. You can only glue directly onto a screed which is suitable for this purpose (check for flatness, adhesion, cracks, etc), in line with the generally acknowledged rules and instructions of the trade. The floor base must be dry, hard, and even. The general fitting instructions regarding Quick-Step Uniclic® Multifit parquet as outlined in this document apply here as well. You should also take the same preparatory measures (expansion joints, floor heating, etc).

9

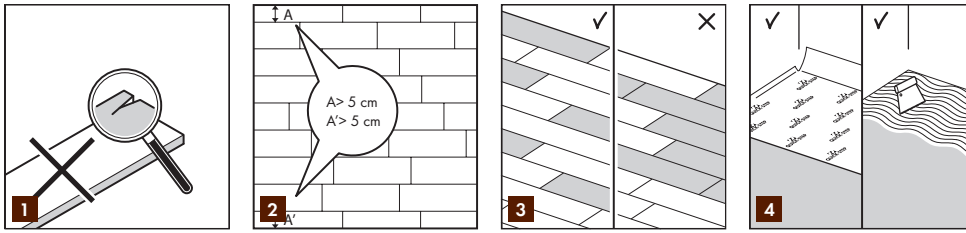
A new parquet floor can also be laid on top of an existing tiled floor. In this case, the parquet should not be glued to the tiled floor, but laid floating.

10

To fit wooden floors, you need the following standard tools: hammer, saw (jig-saw, hand circular saw, hand saw or cross-cut saw), pencil, tape measure, safety goggles and gloves.

11

In addition, you also need the following accessories: installation kit (pulling iron, spacers, and a Uniclic®-adapted tapping block), maintenance products, parquet glue and a glue trowel or underlay system. If you decide to glue your parquet floor, we recommend Quick-Step parquet glue. Always follow the adhesive producer's information and instructions regarding drying time, consumption, the notched trowel, and such like. These instructions are given on the adhesive packaging. If you opt for a floating fitting, use an underlay which gives the floor a stable base, such as the Quick-Step Unisound underlay. The use of accessories other than Quick-Step accessories can damage the Quick-Step floor. In such cases, the warranty provided by Quick-Step will be void. Therefore, we advise you to use only Quick-Step accessories, which are designed and tested specially for use with Quick-Step panels.


1

Check all floor panels before and during installation. Defective panels must never be used.

2

Measure the room before you start fitting. Make sure that the last row of panels is at least 5 cm wide when you finish fitting.

3

Make sure the floor panels are mixed sufficiently when you install them, so that you do not end up with too many identical, light or dark panels next to each other. To obtain the best visual effect, it is best to fit the panels in the direction of the longest wall and parallel to the incidence of light.

Check whether the old skirting can be removed. You can also leave the wall skirting boards in place and finish the floor with Quick-Step profiles or cover the existing skirting boards with the Quick-Step cover skirting board.

Check that the doors can still open and close after the floor and underlay have been installed (minimum + 1 cm).

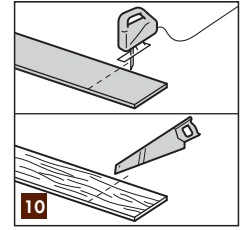
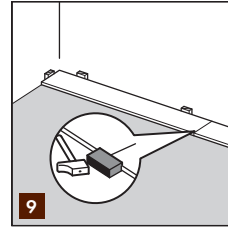
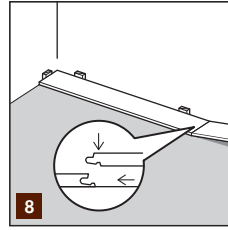
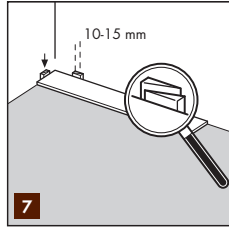
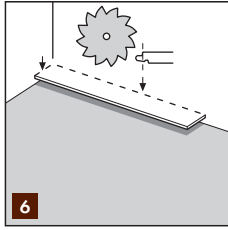
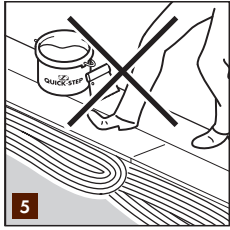
Uniclic® Multifit floor panels are not suitable for use in damp spaces like bathrooms and saunas.

With Uniclic® Multifit floor panels you can choose where you want to begin. Think about what will be the easiest way to install the floor. We will demonstrate the installation for right-handed people, from left to right. You can work in the other direction if you want.

Uniclic® Multifit is a revolutionary system for fitting wooden floors. The panels can be clicked together easily thanks to the ingenious shape of the tongue and groove. Uniclic® Multifit is unique because you can fit the panels in three different ways: 1. By clicking them together at an angle of 20 - 30° 2. By pressing down on the short side 3. By sliding them together horizontally with the Uniclic® tapping block or pulling iron (handy in difficult situations).

4

If you opt for a glued fitting, follow the corresponding instructions when applying the glue. If you chose a floating installation, you must first lay the underlay across the breadth of the room and then gradually as you lay the planks. It is vital that you use a levelling underlay to smooth away any unevenness in the floor base. In most cases, a damp-inhibiting foil should be used against rising damp or condensation. You can find out more information about Quick-Step underlays and how to fit them on the packaging of your underlay or from your dealer.



5 Uniclic® panels are not suitable for use in damp spaces like bathrooms and saunas. With Uniclic® panels you can choose where you want to begin. Think about what will be the easiest way to install the floor. We will demonstrate the installation for right-handed people, from left to right. You can work in the other direction if you want. Uniclic® Multifit is a revolutionary system for fitting wooden floors. The floorboards can be clicked together easily thanks to the ingenious shape of the tongue and groove. Uniclic® Multifit is unique because you can fit the floorboards in three different ways: 1. By clicking them together at an angle of 20 - 30° 2. By pressing down on the short side 3. By sliding them together horizontally with the Uniclic® tapping block or pulling iron (handy in difficult situations). If you opt for a glued fitting, follow the corresponding instructions when applying the glue. If you chose a floating installation, you must first lay the underlay across the breadth of the room and then gradually as you lay the planks. It is vital that you use a levelling underlay to smooth away any unevenness in the floor base. In most cases, a damp-inhibiting foil should be used against rising damp or condensation. You can find out more information about Quick-Step underlays and how to fit them on the packaging of your underlay or from your dealer. If you are gluing your floor, try to walk as little as possible on the glued section during laying.

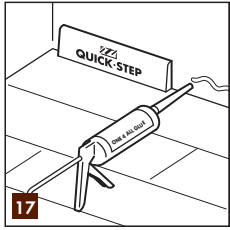
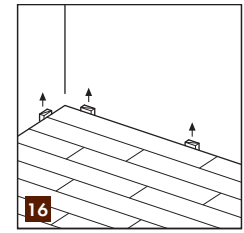
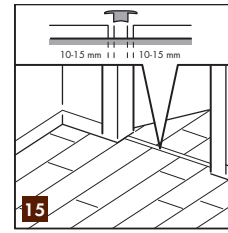
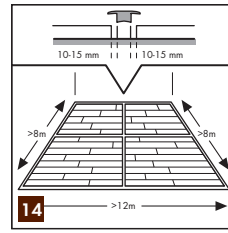
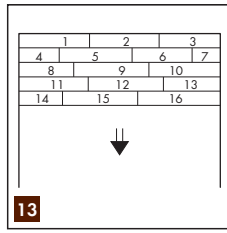
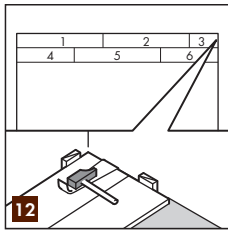
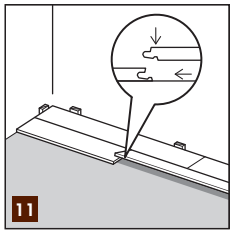
6 Begin the first row with a whole plank. First saw off the tongue on both the long and the short sides.

7 Install the plank with the sawn off edges against the wall. Put spacers provided in the installation kit between the plank and the wall. This ensures that your expansion joint is wide enough: 10 to 15 mm.

8 Fit the floorboard with the short side against the first floorboard. Press gently with the short side facing down. The panels will now click together.

9 Position the Uniclic® tapping block over the short joint between the panels and tap carefully until the panels fully align. Make sure that both panels are flat on the base floor and that you position the tapping block as indicated in the figure to avoid any damage.

10 Of course you also need to saw the floorpanels. To obtain a clean cut, the top surface should be face down when you use a jigsaw or circular handsaw, and up when you use a handsaw or a crosscut saw. Ensure that the end joints of the panels in two successive rows are never in line. Always ensure that the joints are staggered by at least 15 cm (6").


11

Of course you also need to saw the panels. To obtain a clean cut, the top surface should be face down when you use a jigsaw or circular handsaw, and up when you use a handsaw or a crosscut saw. Ensure that the end joints of the panels in two successive rows are never in line. Always ensure that the joints are staggered by at least 15 cm or 6 inches. Slide the first panel of the second row into the previous row. Then slide the next plank together horizontally and push it down gently.

12

In places where it is difficult to install the Uniclic® Multifit planks with the tapping block (e.g. next to a wall, in a corner, the last row, etc), you can tap them together with the pulling iron and a hammer.

13

Continue like this to the end of the room.

14

In rooms with lengths of more than 12 m and widths of more than 8 m, there should be an intermediate expansion joint. The swelling and shrinking is linear, so the bigger the surface, the bigger the play at the edge has to be.

15

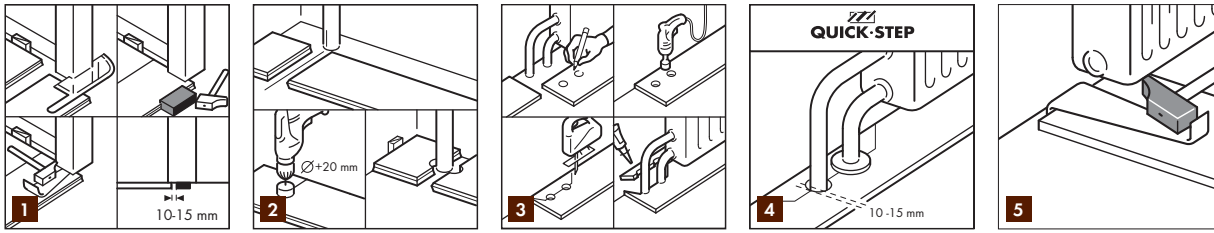
Wood is the main element of this Quick-Step parquet floor. Since the damp in the room can vary, for example, between summer and winter, the floor will need space to swell and shrink. For this reason, make sure you leave an expansion joint of minimum 10 to 15 mm (5/16" to 3/8") on all sides of the floor, around pipes, thresholds and under doors. Remember that the floor can move in one direction. Always retain an expansion joint (e.g. under doors) between the different rooms. These expansion joints are sealed with a profile (like the Quick-Step Incizo® finishing profile) which is fastened to the base floor.

16

Remove all spacers.

17

Install the skirting over the plastic membrane that runs up the wall from under the floor. Never attach the skirting to the floor but attach it to the wall. This method allows the floor to expand and contract under the skirting. In places where profiles or skirtings cannot be placed, fill the expansion gaps with caulking (Quick-Step Kit).


1

When sawing the floor panels make sure that the expansion joint under the door is at least 10 to 15 mm. If you cannot lift the panel, use the tapping block or pulling iron and hammer to tap the panels together when the planks are flat on the floor.

2

In rows where there is a pipe, make sure the pipe falls exactly in line with the short side of two panels. Take a drill bit with the same diameter as the pipe plus 20 mm (3/4"). Click the panels together on the short side and drill a hole centered on the joint between the two panels. Now you can install the panels on the floor.

3

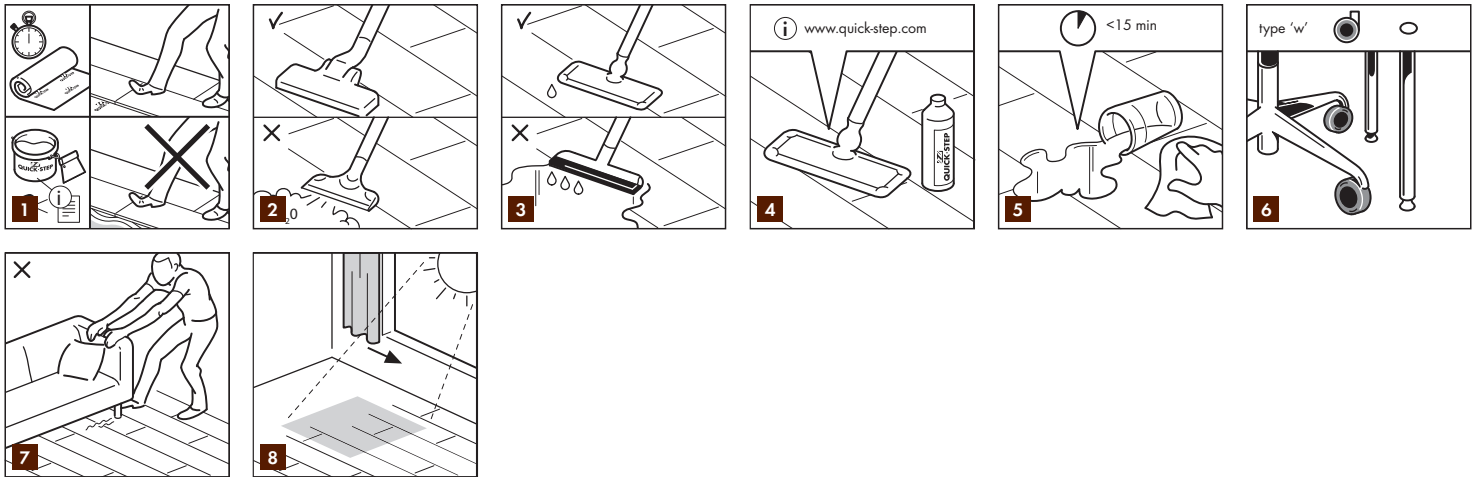
In rows where there is a double pipe, proceed as follows: 1. Measure where the pipe will come through the plank. Don't forget to allow to foresee space for the expansion joint 2. Take a drill bit measuring the diameter of the pipe plus 20 mm for the expansion. Drill through the panel where the pipe will come through 3. Extend the hole to the edge of the panel 4. Lay the panel around the pipe 5. Take another panel and saw a piece that fits exactly in the remaining hole, and glue this piece with normal wood glue.

4

For a perfect finish around pipes, use rosettes (Quick-Step) or caulking (Quick-Step Kit). For fitting in damp rooms such as bathrooms, always use Quick-Step Kit.

5

In places where it is difficult to install the planks with the tapping block (e.g. underneath radiators), you can tap them together with the pulling iron and a hammer.


1

With a floating fitting, you can step on the floor during fitting and immediately afterwards to start on the finishing. With a glued fitting, always follow the adhesive producer's information and instructions regarding drying time. After fitting, a temperature of between 18 and 20°C and a relative humidity of between 35 and 60% are still important for a wooden floor. During the winter months, the air in the room is usually extremely dry. For this reason, it is best to place humidifiers on the radiators to obtain a constant humidity level. For large rooms, electric humidifiers will probably be necessary. In summer and autumn, when there is a high relative humidity, the room should be well ventilated.

2

Dry maintenance can be carried out with a Quick-Step micro-fibre cloth or with a vacuum cleaner. Make sure that this vacuum cleaner has light wheels and a special parquet brush to avoid scratching your floor. Never use a steam cleaner.

3

Wet maintenance is absolutely forbidden.

4

For slightly damp cleaning we recommend the Quick-Step maintenance kit (see instructions for these products). Remember that using other cleaning products may damage your floor. Always wipe dry immediately until no more moisture is visible on the floor. Bevelled products must only be cleaned with a dry cloth. For our oiled wood floors we recommend using Quick-Step Oil Care once in a while to prevent your floor from looking dried-out and dull. With the Quick-Step Oil Care you will restore the original look of your floor. Always follow the instructions provided with the product carefully.

5

Remove any water immediately.

6

Protect furniture and chair legs. Avoid bringing dirt, water and sand indoors by providing a suitable floor mat at the door. Use (office) chairs and seats with soft wheels that are suitable for a laminate floor and/or use a suitable desk mat.

7

Never drag items of furniture over the floor, but lift them up.

8

As with any natural product, sunlight can cause colour variations in the wood's surface.